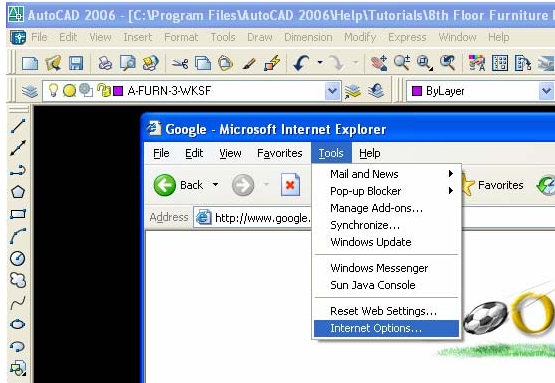
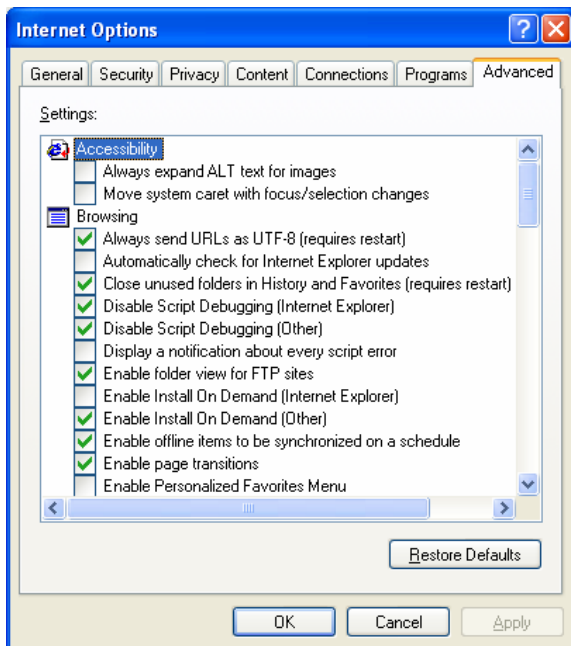


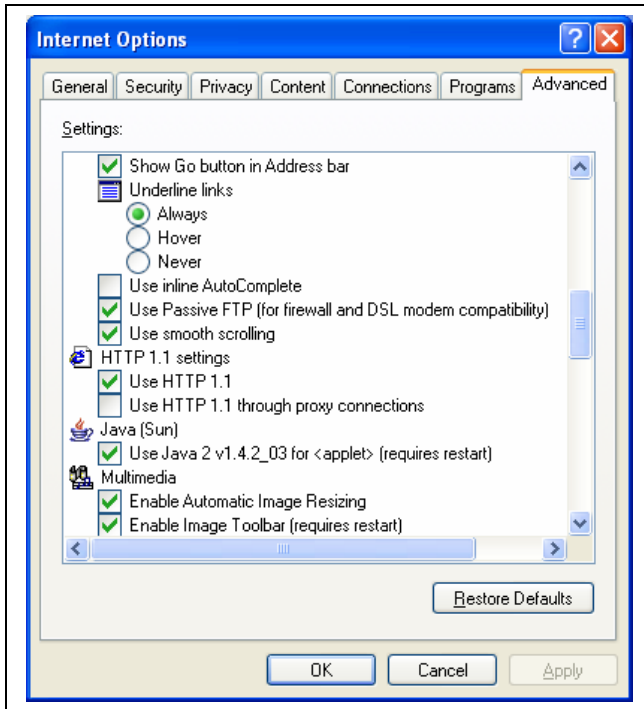
Some computers have difficulties with connection FTP servers. Follows are some suggestions to help in file transfer and access. These are some advanced setting to check on your web browser; make sure fields are checked/not checked.



At the top of your favorite web browser, select “tools/ internet options/ advanced”



Be sure “ Enable folder view for FTP sites” is checked.



Also see if “Use passive FTP (for firewall and DSL modem compatibility) has been check.

Lastly, often internet security could be set too high to allow the use of this service. Just lower the setting temporary to check.